

# Soft Proposal Networks for Weakly Supervised Object Localization Supplementary Material

Yi Zhu<sup>1</sup>, Yanzhao Zhou<sup>1</sup>, Qixiang Ye<sup>\*1</sup>, Qiang Qiu<sup>2</sup> and Jianbin Jiao<sup>†1</sup>

<sup>1</sup>University of Chinese Academy of Sciences

<sup>2</sup>Duke University

{zhuyi215, zhouyanzhao215}@mails.ucas.ac.cn, {qxye, jiaojb}@ucas.ac.cn, qiang.qiu@duke.edu

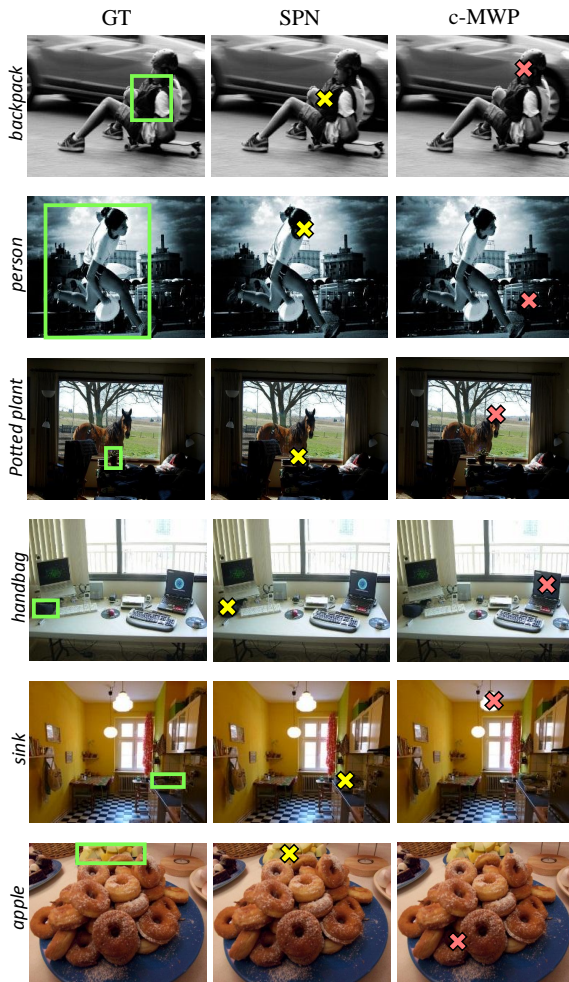


Figure 1. Pointing without prediction. Localization results of SPN and c-MWP on the MS COCO 2014 validation set.

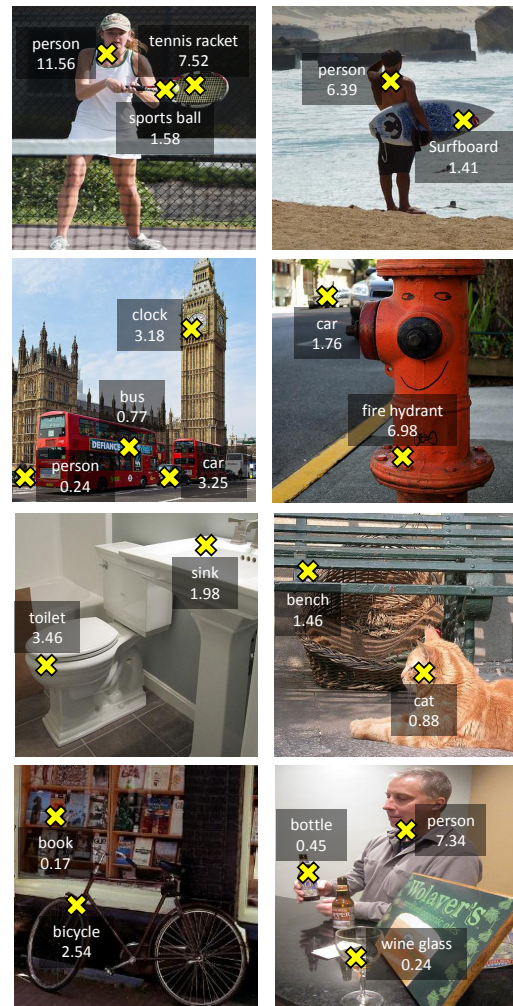


Figure 2. Pointing with prediction. Localization results of SPN on the MS COCO 2014 validation set.

\*Corresponding Authors

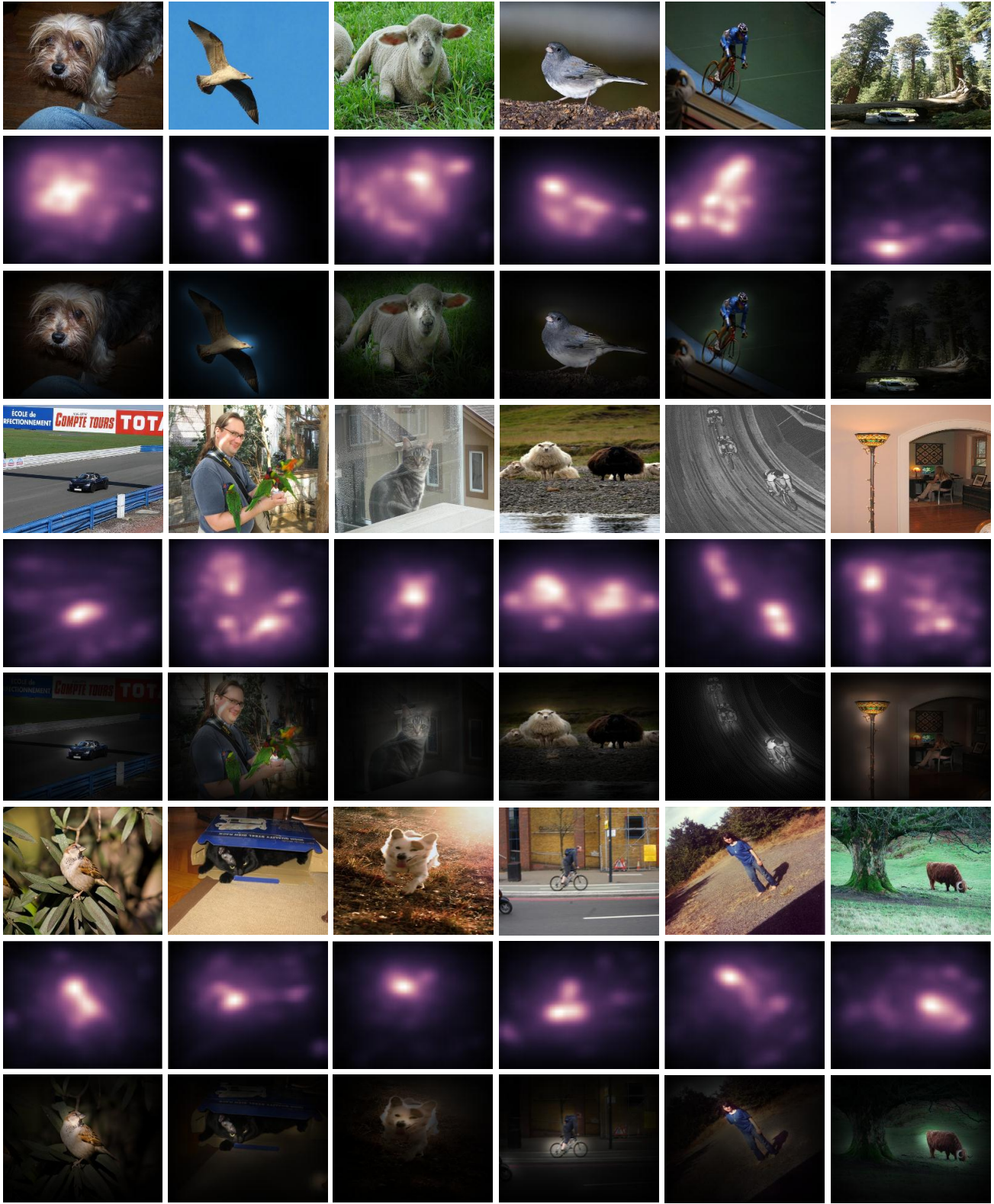


Figure 3. Visualization of proposal maps generated by the SP module and the proposal coupled images.



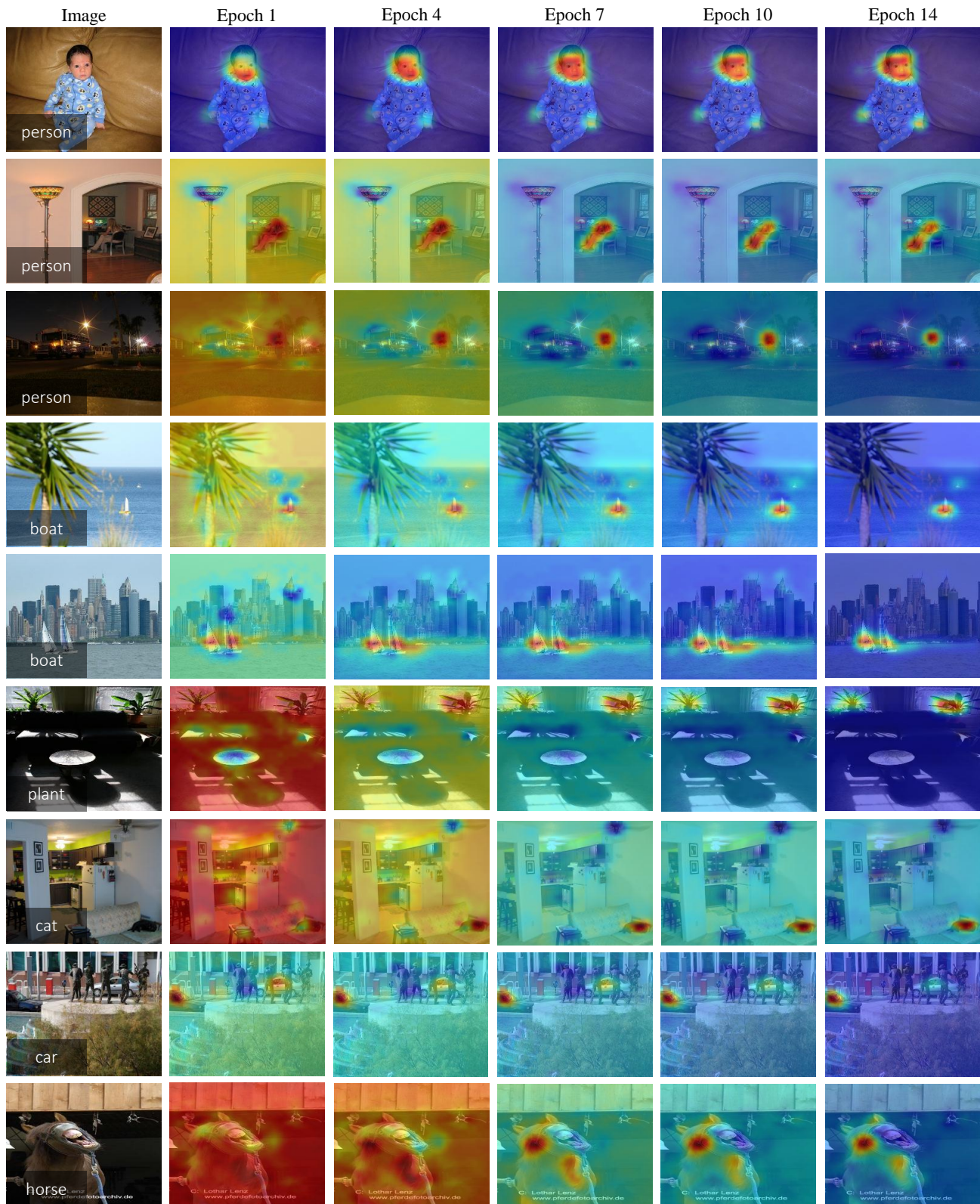


Figure 4. Each row presents the evolution of response maps during the training procedure of SP-VGGNet on the VOC2007 dataset.



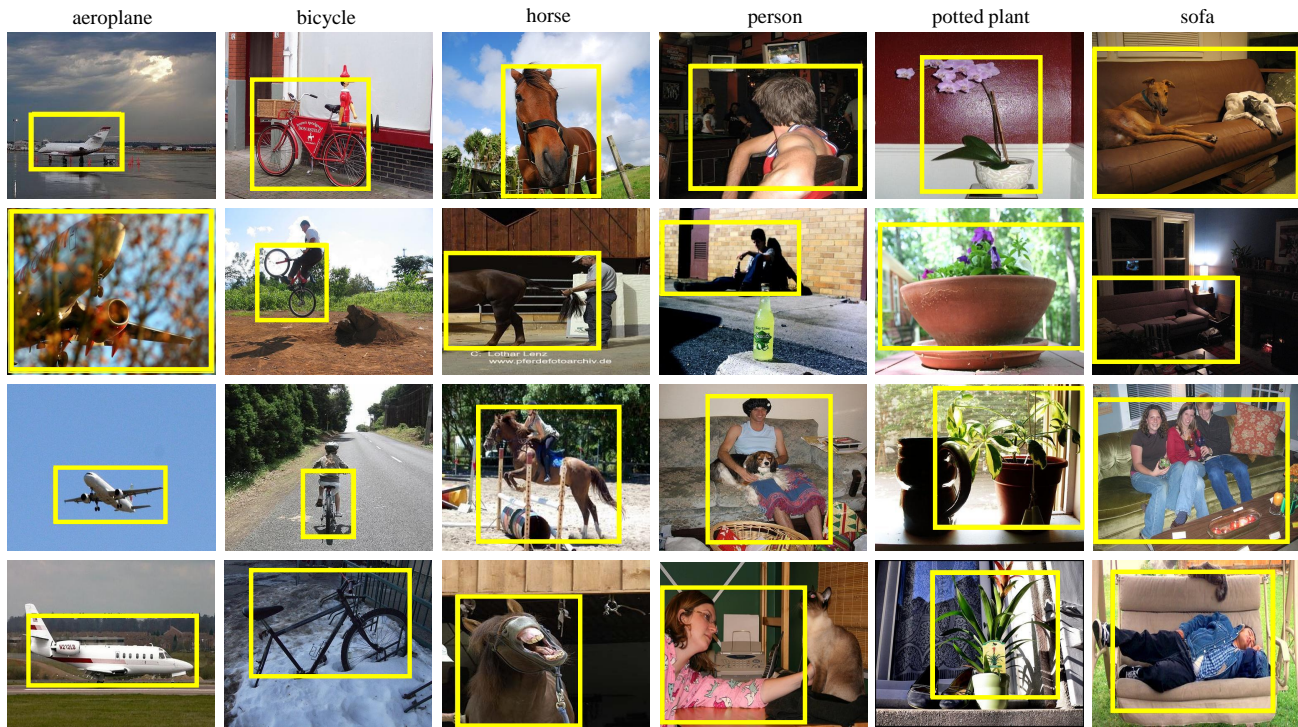


Figure 5. Bounding box localization results of SPN on the VOC2007 test set.

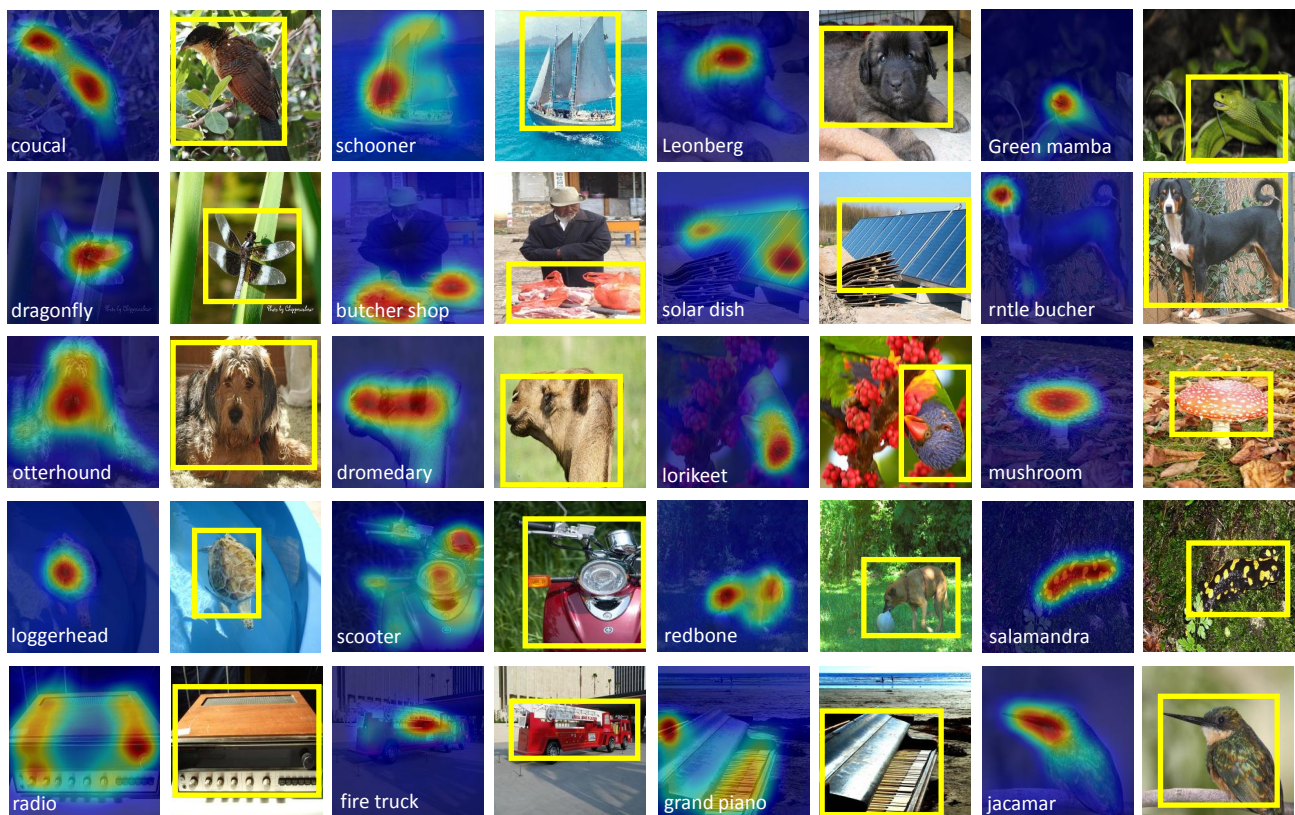


Figure 6. Response maps and bounding box localization results of SP-GoogLeNet on the ImageNet validation set.